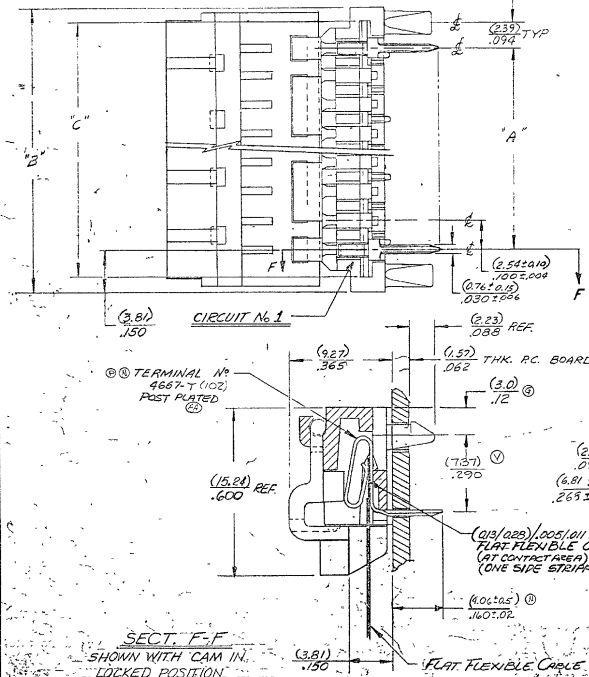
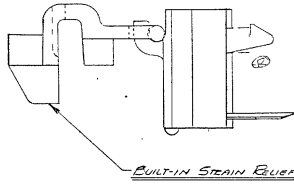
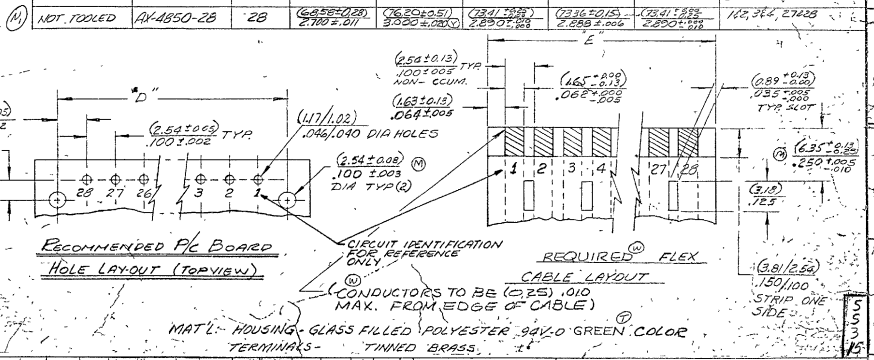


NOTES:
1) SEE PS-4850 FOR REFERENCE.



PART NO	ENG NO	NUMBER OF CIRCUITS	DIM. A	DIM. B	DIM. C	DIM. D	DIM. E	CABLE SLOTS FOR STRAIN RELIEF LOCATED BETWEEN @
15-25-4051	A-4850-5	5	(10.16 ± 0.05) 400 ± 0.06	(17.78 ± 0.51) 700 ± 0.02	(4.99 ± 0.28) @ 590 ± 0.05	(4.91 ± 0.09) 588 ± 0.03	(4.99 ± 0.28) 590 ± 0.05	1 & 2, 3 & 4
-406	-6	6	(12.20 ± 0.05) 500 ± 0.05	(20.32 ± 0.02) 800 ± 0.02	(2.53 ± 0.02) 890 ± 0.02	(2.47 ± 0.02) 888 ± 0.03	(2.53 ± 0.02) 890 ± 0.02	4 & 5
-4071	-7	7	(15.24 ± 0.08) 600 ± 0.07	(22.64 ± 0.02) 900 ± 0.02	(2.96 ± 0.02) 990 ± 0.02	(2.90 ± 0.02) 988 ± 0.03	(2.96 ± 0.02) 990 ± 0.02	5 & 6
-4081	-8	8	(17.78 ± 0.10) 700 ± 0.07	(25.40 ± 0.02) 1000 ± 0.02	(3.21 ± 0.02) 1090 ± 0.02	(3.15 ± 0.02) 1088 ± 0.03	(3.21 ± 0.02) 1090 ± 0.02	3 & 4, 7 & 8
-4091	-9	9	(20.32 ± 0.10) 800 ± 0.07	(27.92 ± 0.02) 1100 ± 0.02	(3.51 ± 0.02) 1190 ± 0.02	(3.45 ± 0.02) 1188 ± 0.03	(3.51 ± 0.02) 1190 ± 0.02	8 & 9
-4101	-10	10	(22.86 ± 0.10) 900 ± 0.08	(30.50 ± 0.02) 1200 ± 0.02	(3.76 ± 0.02) 1290 ± 0.02	(3.70 ± 0.02) 1288 ± 0.03	(3.76 ± 0.02) 1290 ± 0.02	9 & 10
-4111	-11	11	(25.40 ± 0.10) 1000 ± 0.08	(33.02 ± 0.02) 1300 ± 0.02	(4.01 ± 0.02) 1390 ± 0.02	(3.95 ± 0.02) 1388 ± 0.03	(4.01 ± 0.02) 1390 ± 0.02	10 & 11
-4121	-12	12	(27.94 ± 0.10) 1100 ± 0.08	(35.56 ± 0.02) 1400 ± 0.02	(4.26 ± 0.02) 1490 ± 0.02	(4.20 ± 0.02) 1488 ± 0.03	(4.26 ± 0.02) 1490 ± 0.02	11 & 12
-4131	-13	13	(30.48 ± 0.10) 1200 ± 0.08	(38.10 ± 0.02) 1500 ± 0.02	(4.51 ± 0.02) 1590 ± 0.02	(4.45 ± 0.02) 1588 ± 0.03	(4.51 ± 0.02) 1590 ± 0.02	12 & 13
-4141	-14	14	(33.02 ± 0.10) 1300 ± 0.08	(40.64 ± 0.02) 1600 ± 0.02	(4.76 ± 0.02) 1690 ± 0.02	(4.70 ± 0.02) 1688 ± 0.03	(4.76 ± 0.02) 1690 ± 0.02	13 & 14
-4151	-15	15	(35.56 ± 0.10) 1400 ± 0.08	(43.18 ± 0.02) 1700 ± 0.02	(5.01 ± 0.02) 1790 ± 0.02	(4.95 ± 0.02) 1788 ± 0.03	(5.01 ± 0.02) 1790 ± 0.02	14 & 15
-4161	-16	16	(38.10 ± 0.10) 1500 ± 0.08	(45.72 ± 0.02) 1800 ± 0.02	(5.26 ± 0.02) 1890 ± 0.02	(5.20 ± 0.02) 1888 ± 0.03	(5.26 ± 0.02) 1890 ± 0.02	15 & 16
-4171	-17	17	(40.64 ± 0.10) 1600 ± 0.08	(48.26 ± 0.02) 1900 ± 0.02	(5.51 ± 0.02) 1990 ± 0.02	(5.45 ± 0.02) 1988 ± 0.03	(5.51 ± 0.02) 1990 ± 0.02	16 & 17
-4181	-18	18	(43.18 ± 0.10) 1700 ± 0.08	(50.80 ± 0.02) 2000 ± 0.02	(5.76 ± 0.02) 2090 ± 0.02	(5.70 ± 0.02) 2088 ± 0.03	(5.76 ± 0.02) 2090 ± 0.02	17 & 18
-4191	-19	19	(45.72 ± 0.10) 1800 ± 0.10	(53.34 ± 0.02) 2100 ± 0.02	(6.01 ± 0.02) 2190 ± 0.02	(5.95 ± 0.02) 2188 ± 0.03	(6.01 ± 0.02) 2190 ± 0.02	18 & 19
-4201	-20	20	(48.26 ± 0.10) 1900 ± 0.10	(55.88 ± 0.02) 2200 ± 0.02	(6.26 ± 0.02) 2290 ± 0.02	(6.20 ± 0.02) 2288 ± 0.03	(6.26 ± 0.02) 2290 ± 0.02	19 & 20
-4211	-21	21	(50.80 ± 0.10) 2000 ± 0.10	(58.42 ± 0.02) 2300 ± 0.02	(6.51 ± 0.02) 2390 ± 0.02	(6.45 ± 0.02) 2388 ± 0.03	(6.51 ± 0.02) 2390 ± 0.02	20 & 21
-4221	-22	22	(53.34 ± 0.10) 2100 ± 0.10	(60.96 ± 0.02) 2400 ± 0.02	(6.76 ± 0.02) 2490 ± 0.02	(6.70 ± 0.02) 2488 ± 0.03	(6.76 ± 0.02) 2490 ± 0.02	21 & 22
-4231	-23	23	(55.88 ± 0.10) 2200 ± 0.10	(63.50 ± 0.02) 2500 ± 0.02	(7.01 ± 0.02) 2590 ± 0.02	(6.95 ± 0.02) 2588 ± 0.03	(7.01 ± 0.02) 2590 ± 0.02	22 & 23
-4241	-24	24	(58.42 ± 0.10) 2300 ± 0.10	(66.04 ± 0.02) 2600 ± 0.02	(7.26 ± 0.02) 2690 ± 0.02	(7.20 ± 0.02) 2688 ± 0.03	(7.26 ± 0.02) 2690 ± 0.02	23 & 24
15-25-4251	A-4850-25	25	(60.96 ± 0.10) 2400 ± 0.10	(68.58 ± 0.51) 2700 ± 0.02	(7.51 ± 0.36) 2790 ± 0.05	(7.45 ± 0.36) 2788 ± 0.05	(7.51 ± 0.36) 2790 ± 0.05	24 & 25



REV	DATE	BY	CHKD	DESCRIPTION
1				INITIAL DESIGN
2				REVISED DIMENSIONS
3				REVISED DIMENSIONS
4				REVISED DIMENSIONS
5				REVISED DIMENSIONS
6				REVISED DIMENSIONS
7				REVISED DIMENSIONS
8				REVISED DIMENSIONS
9				REVISED DIMENSIONS
10				REVISED DIMENSIONS
11				REVISED DIMENSIONS
12				REVISED DIMENSIONS
13				REVISED DIMENSIONS

DIMENSION SHOWN IN METRIC INCH		TITLE	
TOLERANCE	METRIC	FLAT FLEXIBLE CABLE CONNECTOR	
FRAMES 1.00	± 0.25	LOW INSERTION FORCE 100 CTRS.	
FRAMES 2.00	± 0.50	WITH TRAJ PLATED TERMINALS	
FRAMES 3.00	± 0.75	MOLEX INCORPORATED	
FRAMES 4.00	± 1.00	DIA. 1-23-76	
FRAMES 5.00	± 1.25	PART NO. 501-4850-N	
FRAMES 6.00	± 1.50	REV. 1	
FRAMES 7.00	± 1.75	MATERIAL: 94V-0 GREEN POLYESTER	
FRAMES 8.00	± 2.00	TERMINALS: TINNED BRASS	
FRAMES 9.00	± 2.25	CABLE: 0.25 0.10 MAX. FROM EDGE	
FRAMES 10.00	± 2.50	CABLE: 0.25 0.10 MAX. FROM EDGE	
FRAMES 11.00	± 2.75	CABLE: 0.25 0.10 MAX. FROM EDGE	
FRAMES 12.00	± 3.00	CABLE: 0.25 0.10 MAX. FROM EDGE	
FRAMES 13.00	± 3.25	CABLE: 0.25 0.10 MAX. FROM EDGE	